

KENNETH M. HART & ASSOC.
DB 1067 PG 185

H V PARTNERS, LLC
DB 2527 PG 577
GPN 7822-31-0017
ZONED A-1

CLARA RICE PRICE
NB 13 PG 296
GPN 7821-29-3197
ZONED A-1

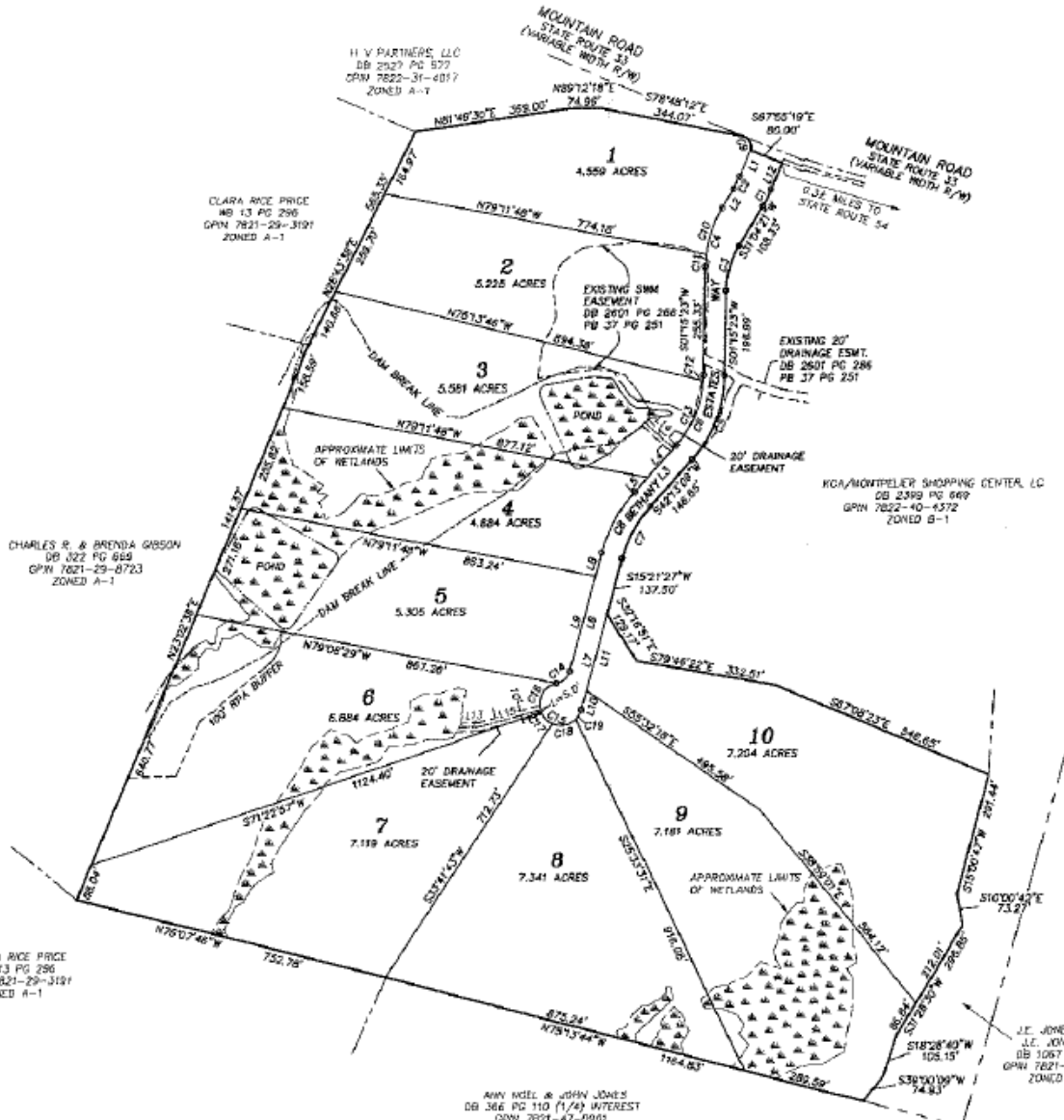
CHARLES R. & BRENDA GIBSON
DB 022 PG 669
GPN 7821-29-8723
ZONED A-1

CLARA RICE PRICE
NB 13 PG 296
GPN 7821-29-3197
ZONED A-1

AMY WELCH & JOHN JONES
DB 366 PG 110 (1/4) INTEREST
GPN 7821-47-0001
ZONED A-1

HCA/MONTPELER SHOPPING CENTER, LC
DB 2319 PG 669
GPN 7822-40-4572
ZONED B-1

J.E. JONES, JR. &
J.E. JONES, M
DB 1067 PG 191
GPN 7821-49-3075
ZONED A-1

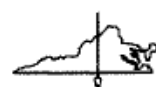


CURVE TABLE						
CURVE	DELTA	RADIUS	LENGTH	TAN	CHORD	CHORD BEARING
C1	8°59'39"	290.00	45.58	22.81	45.48	228°34'31"W
C2	8°59'39"	210.00	36.95	16.52	32.93	228°34'31"W
C3	29°48'58"	217.50	113.18	57.90	111.91	316°09'51"W
C4	29°48'58"	288.50	147.01	75.21	148.36	316°09'51"W
C5	40°57'46"	300.00	214.48	112.05	209.94	221°44'19"W
C6	40°57'46"	250.00	178.73	93.38	174.28	221°44'19"W
C7	26°51'46"	300.00	140.63	71.64	139.36	228°47'18"W
C8	26°51'46"	350.00	164.09	83.58	162.59	228°47'18"W
C9	90°00'00"	25.00	39.27	25.00	35.36	228°25'19"E
C10	29°47'01"	280.50	117.27	59.49	116.43	317°10'49"W
C11	6°01'57"	288.50	29.74	14.86	29.73	304°16'20"W
C12	9°24'03"	250.00	14.84	7.42	14.84	304°16'20"W
C13	37°53'44"	250.00	163.89	85.01	162.90	223°26'17"W
C14	63°36'44"	40.00	44.41	24.81	42.16	347°09'49"W
C15	743°36'44"	50.00	212.59	103.62	84.98	342°50'11"E
C16	100°00'38"	50.00	87.57	59.95	76.80	228°47'53"W
C17	44°36'41"	50.00	36.99	20.51	37.95	347°40'45"E
C18	69°58'48"	50.00	60.19	34.35	56.62	379°31'33"W
C19	29°40'44"	50.00	25.90	13.25	25.61	330°11'50"W

LINE TABLE		
LINE	BEARING	LENGTH
L1	S22°04'41"W	67.80
L2	S31°42'41"W	51.90
L3	S42°13'09"W	146.65
L4	S42°13'09"W	101.82
L5	S42°13'09"W	44.83
L6	S18°21'27"W	289.69
L7	S18°21'27"W	234.01
L8	S18°21'27"W	57.23
L9	S18°21'27"W	235.62
L10	S18°21'27"W	45.73
L11	S18°21'27"W	187.28
L12	S22°04'41"W	67.80
L13	S88°01'26"W	47.3
L14	N47°48'50"W	07.8
L15	S74°37'31"W	151.83



BETHANY ESTATES
SOUTH ANNA DISTRICT
HANOVER COUNTY, VIRGINIA
MAY 17, 2006 SCALE: 1" = 200'



CHARLES L. WINGATE
LAND SURVEYOR
5803 STAPLES MILL ROAD
RICHMOND, VIRGINIA 23228
(804)286-3155 • FAX(804)266-5016