

THE ASHTON



Elevation B

Shown with optional: side-entry garage, concrete front porch



Elevation A

Shown with optional: garage door with glass



Elevation C

Shown with optional: side-entry garage,
black windows on front elevation



Elevation A

Shown with optional: side-entry garage, concrete front porch w/ raised brick piers



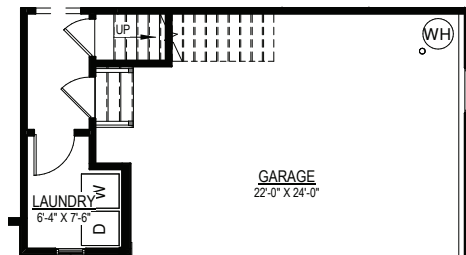
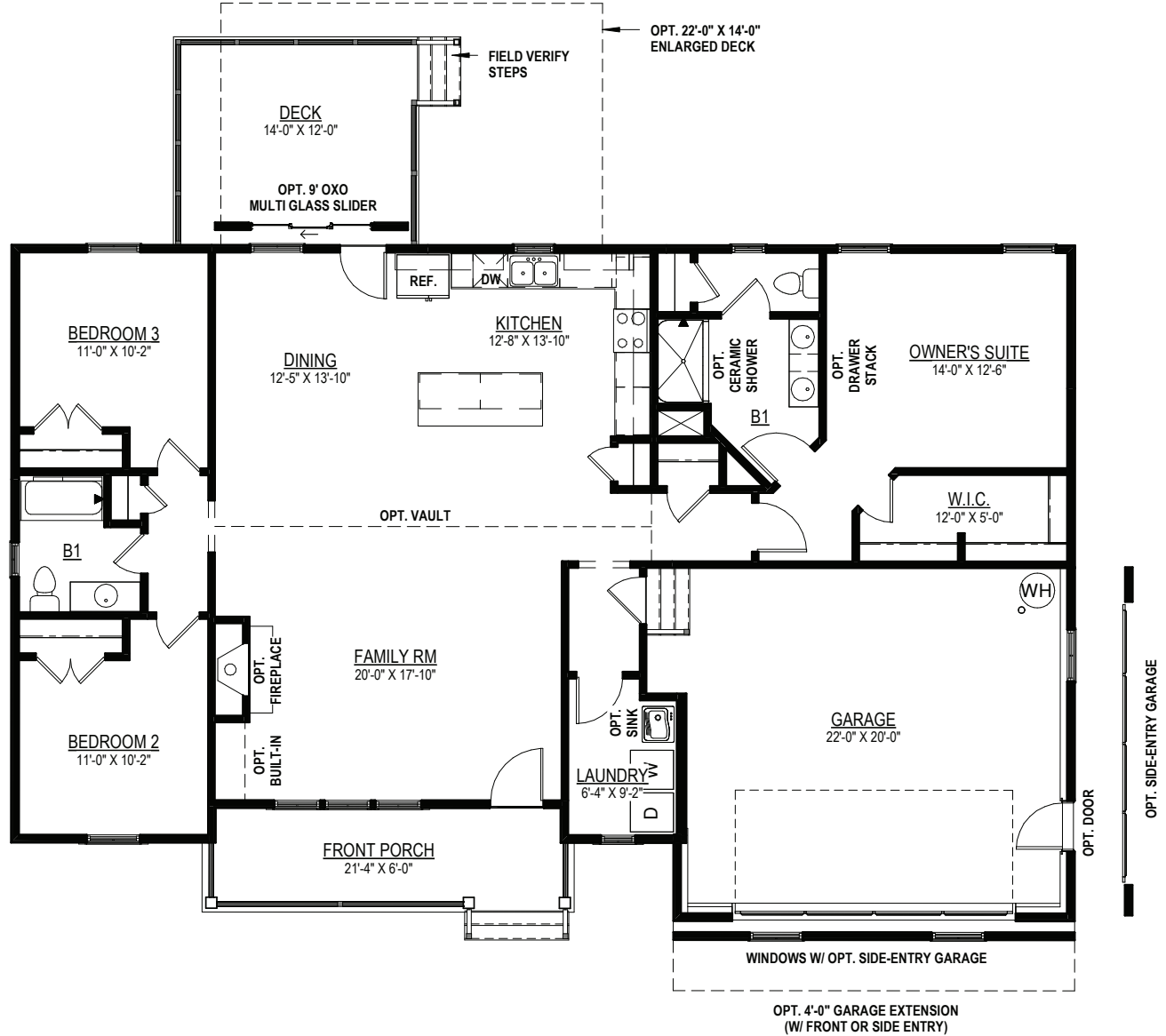
9245 Shady Grove Rd., Suite 200
Mechanicsville, VA 23116
www.rcibuildersnewhomes.com

Elevations shown are artist's rendering. All plans, details, and square footages are approximate and subject to change. Illustrations may not represent finished construction details. All optional items indicated are available at additional cost. Not all features available are shown. Please ask our Sales Representative for complete information.



Updated 6.14.24

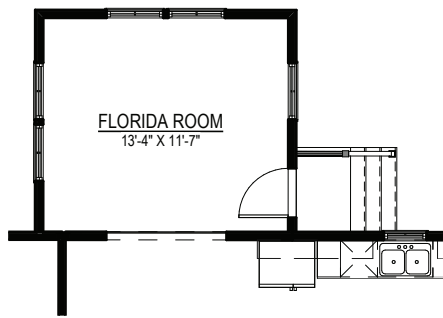
3 BEDROOMS, 2 BATHS, & FAMILY ROOM



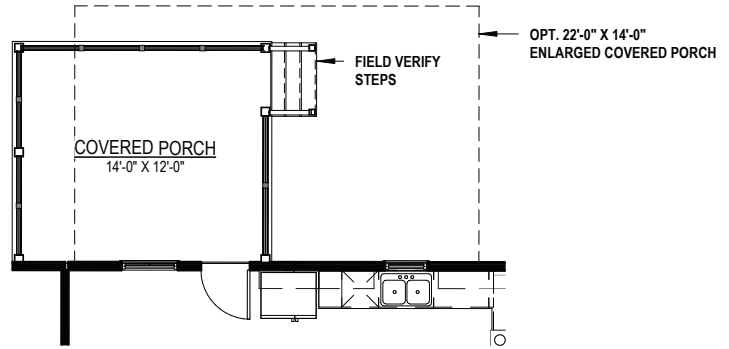
FIRST FLOOR LAYOUT
W/ OPT. ROOM OVER GARAGE
(4'-0" GARAGE EXTENSION
INCLUDED W/ THIS OPTION)

FIRST FLOOR PLAN

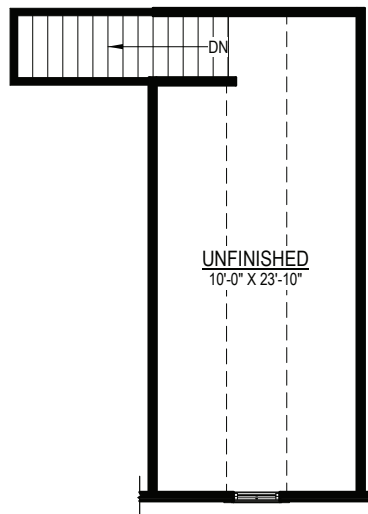
Elevations shown are artist's rendering. All plans, details, and square footages are approximate and subject to change. Illustrations may not represent finished construction details. All optional items indicated are available at additional cost. Not all features available are shown. Please ask our Sales Representative for complete information.



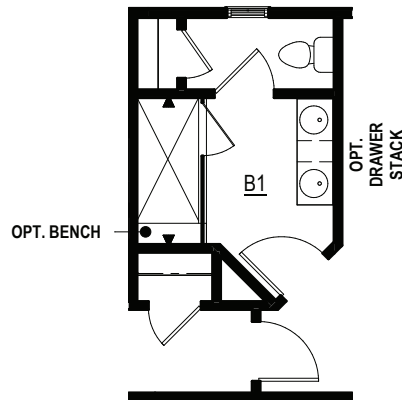
OPT. FLORIDA ROOM
IN-LIEU OF DECK



OPT. COVERED PORCH
OR SCREEN PORCH
IN-LIEU OF DECK



OPT. ROOM OVER GARAGE
(4'-0" GARAGE EXTENSION
INCLUDED W/ THIS OPTION)



OPT. LUXURY
CERAMIC SHOWER
(3X7 SHOWER
2 SHOWER HEADS)