

THE POWELL at Hobbs Hole



Elevation C

SHOWN WITH OPTIONAL SIDE-ENTRY GARAGE & RAISED STONE VENEER



Elevation A



Elevation B



9245 Shady Grove Rd., Suite 200
Mechanicsville, VA 23116
www.rcibuildersnewhomes.com

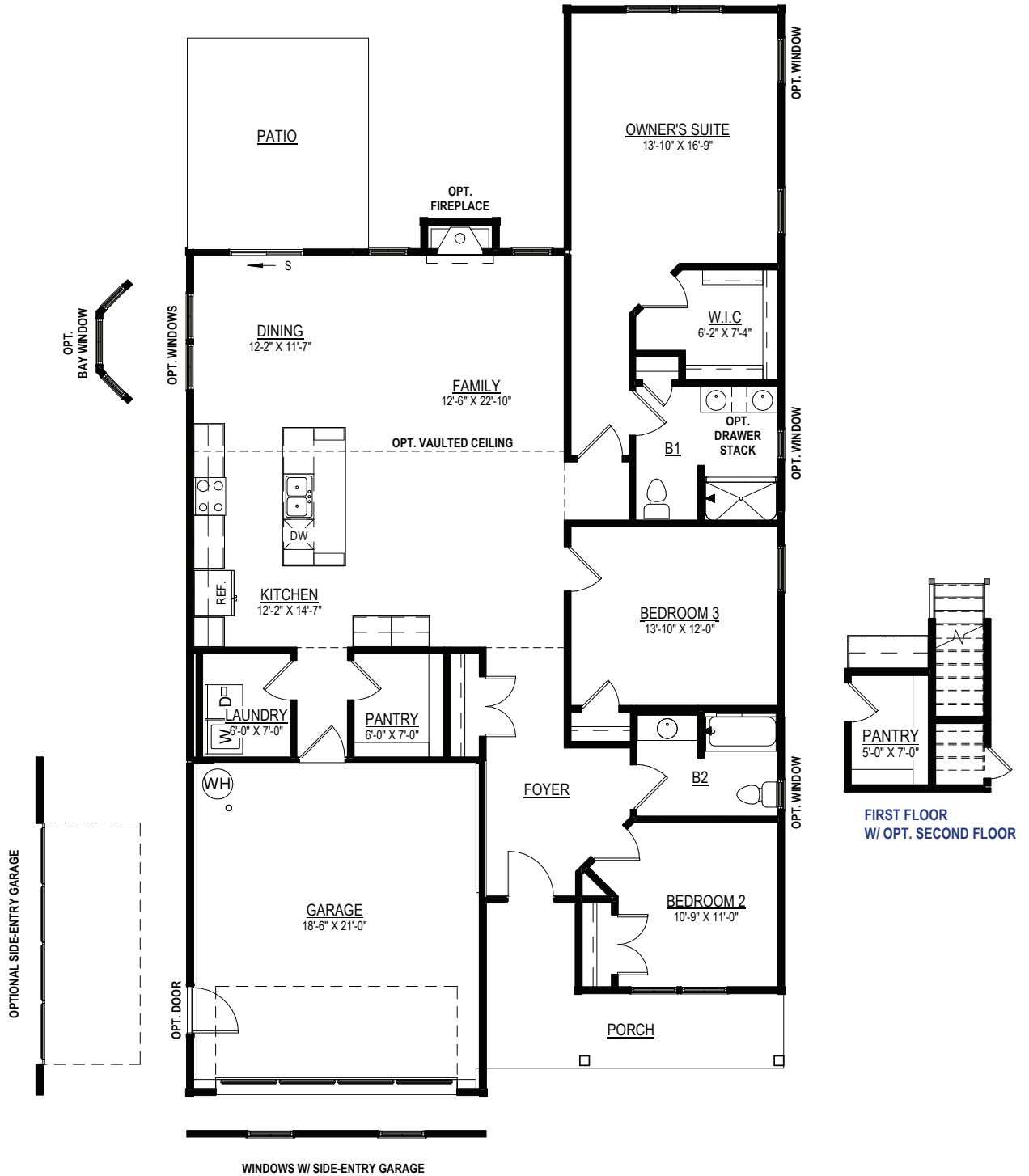
Elevations shown are artist's rendering. All plans, details, and square footages are approximate and subject to change. Illustrations may not represent finished construction details. All optional items indicated are available at additional cost. Not all features available are shown. Please ask our Sales Representative for complete information.



Updated 3.22.24

THE POWELL at Hobbs Hole

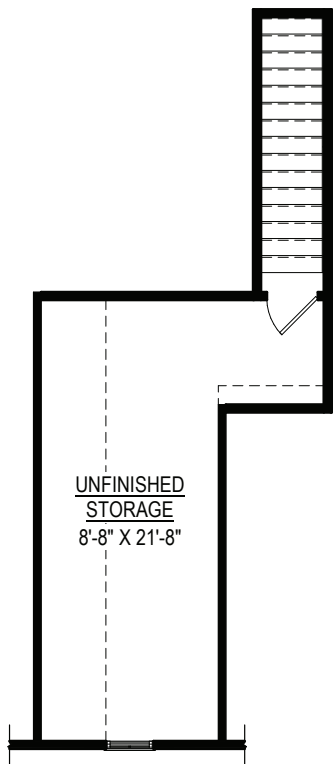
3 BEDROOMS, 2 BATHS,
FAMILY ROOM, OPTIONAL
SECOND FLOOR BEDROOM & BATH



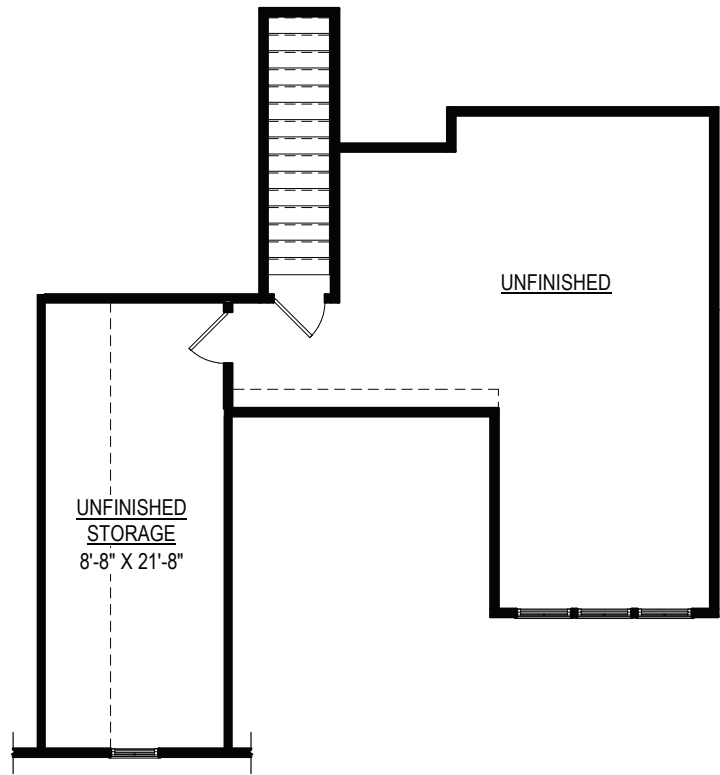
FIRST FLOOR PLAN

Elevations shown are artist's rendering. All plans, details, and square footages are approximate and subject to change. Illustrations may not represent finished construction details. All optional items indicated are available at additional cost. Not all features available are shown. Please ask our Sales Representative for complete information.

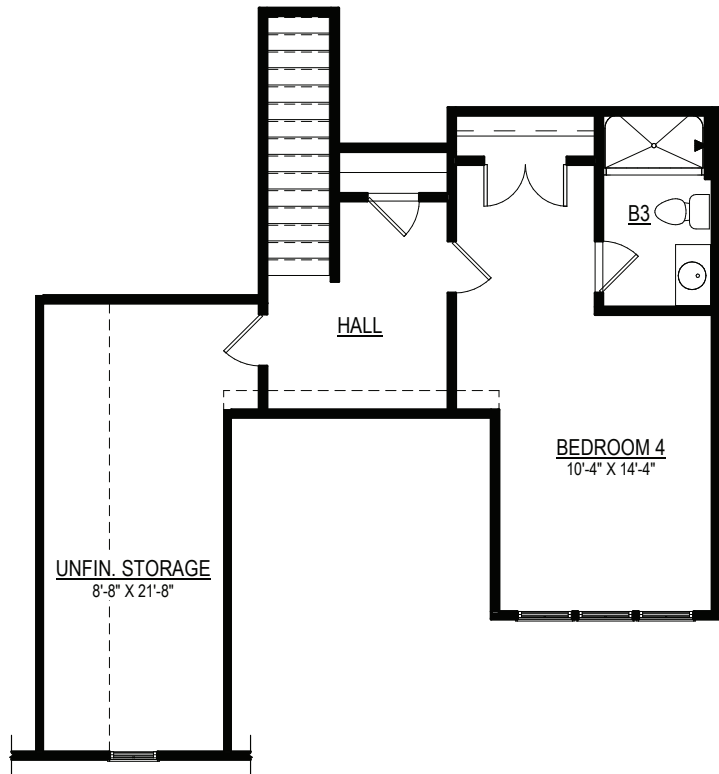
Options



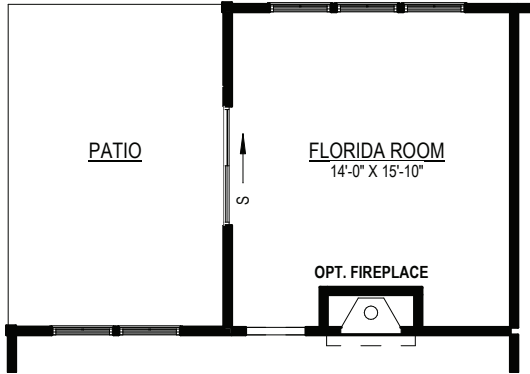
**OPTIONAL WALKUP STORAGE
- UNFINISHED**



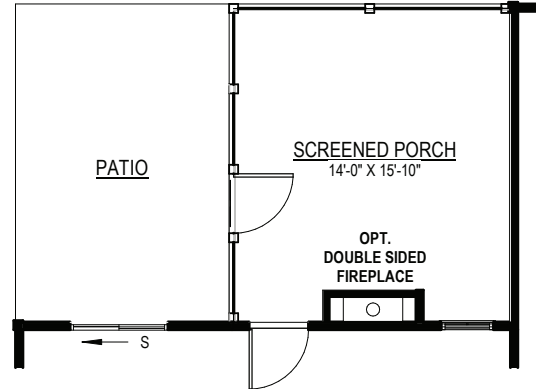
OPTIONAL SECOND FLOOR - UNFINISHED



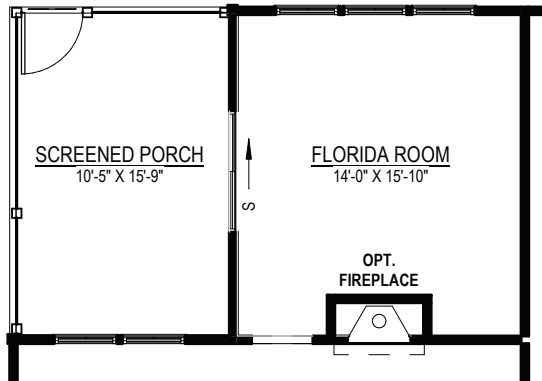
OPTIONAL SECOND FLOOR - FINISHED



OPT. FLORIDA ROOM



OPT. SCREENED PORCH
SHOWN W/ OPT. DOUBLE SIDED
FIREPLACE



OPT. FLORIDA ROOM W/
OPT. SCREENED PORCH