

THE BELL CREEK at Hobbs Hole



Elevation C



Elevation A

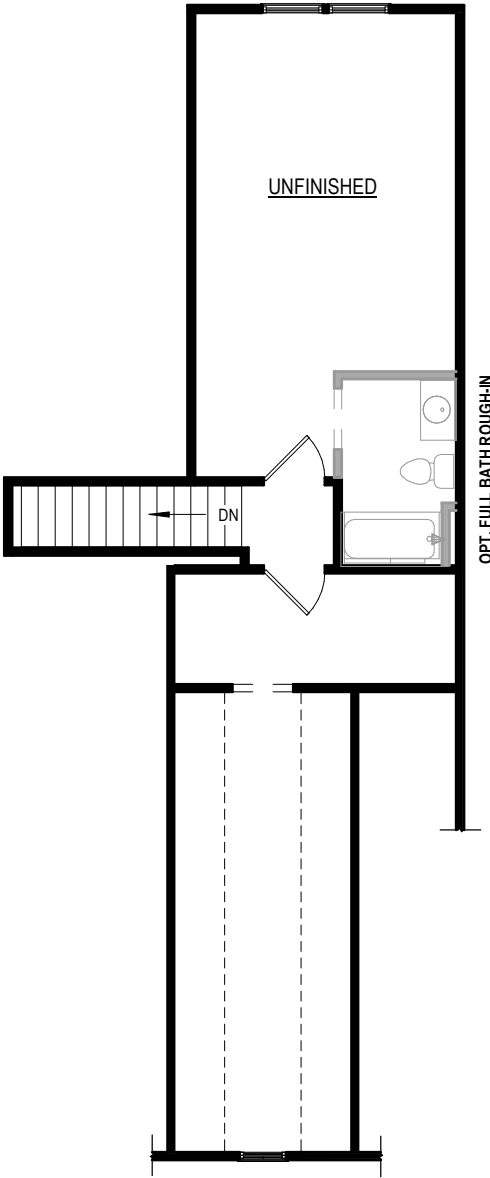


Elevation B

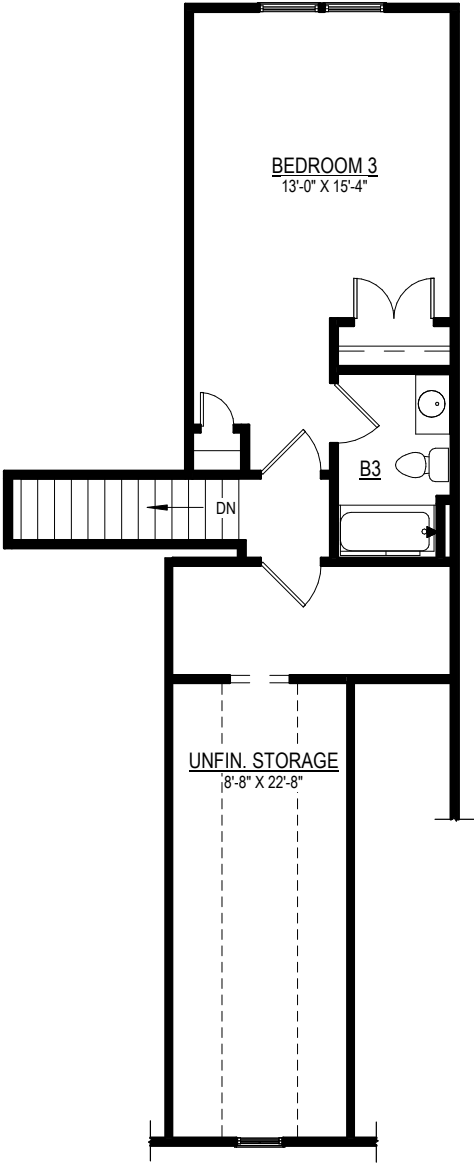


9245 Shady Grove Rd., Suite 200
Mechanicsville, VA 23116
www.rcibuildersnewhomes.com

Floor Plan



OPTIONAL SECOND FLOOR - UNFINISHED

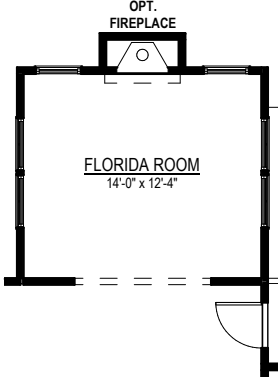


OPTIONAL SECOND FLOOR - FINISHED

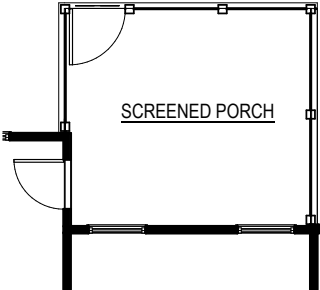
SECOND FLOOR PLAN

Elevations shown are artist's rendering. All plans, details, and square footages are approximate and subject to change. Illustrations may not represent finished construction details. All optional items indicated are available at additional cost. Not all features available are shown. Please ask our Sales Representative for complete information.

Options



OPT. FLORIDA ROOM



OPT. SCREENED PORCH